

# UNDERFLOOR TRUNKING SYSTEMS

## Flush Floor Trunking System ESS / EFS / EFK

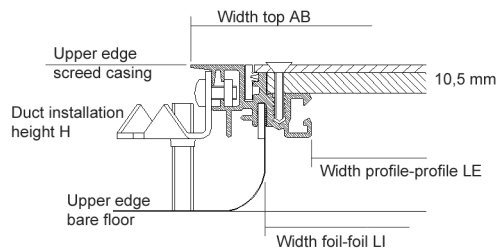
The flush floor trunking system warranted an easy laying or re-fitting of cables about his overall length. There is the possibility to install floor boxes or pedestal boxes via an opening in the blind cover of the flush floor trunking systems. At the use of an ESS connection sockets there is the advantage to choose a smaller duct cross-section as the whole inner section will be open for the laying of cables.

### ESS - Trunking Standard - with steel coverings

For dry rooms with dry cleaned floorings.  
Trunking levelling height from 30 mm, with sound absorbing bearing from 45 mm.  
From 55 mm screed height onwards floor boxes can be installed.  
The trunking at the standard length of 2400 mm is covered by three blind covers each 800 mm length.  
For reinforcement load bearing cross bars are placed under the blind covers.

### ESS - Trunking with flexible screed casing

The trunking walls consist of a flexible screed casing which can be adopted to all uneven floors an which allows step less levelling.



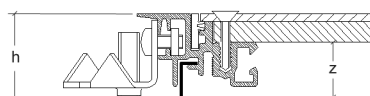
#### Installation conditions:

ESS...	AB	LE	LI
150	166	75	110
200	216	125	160
250	266	175	210
300	316	225	260
350	366	275	310
400	416	325	360
500	516	425	460
600	616	525	560

### ESS - Trunking with trunking bottom

The trunking walls consists of 1 mm galvanised sheet accordance with DIN EN 10142.  
The trunking stability is achieved with flexible screed casing over the side elevations, as with the model ESS. The trunking bottom has no supporting effect. Avoid having the trunking bottom hang freely in the air. Put underlays below the trunking bottom when laying the screed.

With floating screeds, the trunking bottom and trunking elevation must not form any metallic sound bridges to the bare floor.



h	Height z mm
40	28
50	38
60	48
70	58
80	68
90	78

## EFS - Trunking

### Wet cleaned - with steel coverings

For dry rooms with dry or wet cleaned floorings.

Trunking levelling height from 30 mm, with sound absorbing bearing from 45 mm.

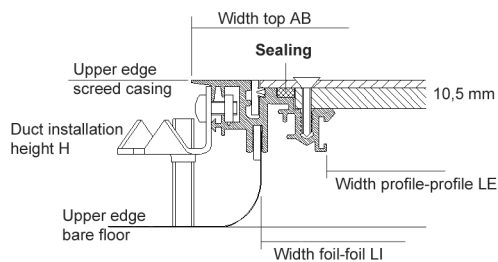
From 55 mm screed height onwards floor boxes can be installed.

The trunking at the standard length of 2400 mm is covered by three blind covers each 800 mm length.

For reinforcement load bearing cross bars are placed under the blind covers.

## EFS - Trunking with flexible screed casing

The trunking walls consists of a flexible screed casing which can be adopted to all uneven floors an which allows step less levelling.



### Installation conditions:

EFS...	AB	LE	LI
150	170	63	115
200	220	113	165
250	270	163	215
300	320	213	265
350	370	263	315
400	420	313	365
500	520	413	465
600	620	513	565

### Note:

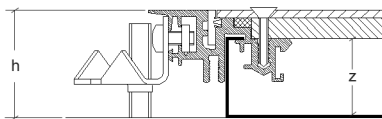
The **sealing** is enclosed as rolls at delivery. They should be installed after completing of screed laying.

## EFS - Trunking with trunking bottom

The trunking walls consists of 1 mm galvanised sheet steel accordance with DIN EN 10142.

The trunking stability is achieved with flexible screed casing over the side elevations, as with the model EFS. The trunking bottom has no supporting effect. Avoid having the trunking bottom hang freely in the air. Put underlays below the trunking bottom when laying the screed.

With floating screeds, the trunking bottom and trunking elevation must not form any metallic sound bridges to zhe bare floor.



h	Height z mm
40,5	28,5
50,5	38,5
60,5	48,5
70,5	58,5
80,5	68,5
90,5	78,5

## EFK - Trunking

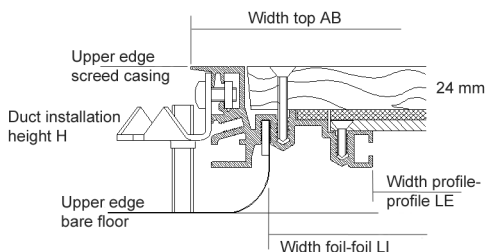
### Wet cleaned - for cassette coverings

For dry rooms with dry or wet cleaned floorings.

Trunking levelling height from 40 mm, with sound absorbing bearing from 55 mm.

Cassette covers for flooring height of 23 mm inclusive adhesive for parquet or stone flooring.

Each cover joint is supported by a cross beam which fixes the distance between the side profiles of the trunking. The distance between the cross beams are 600 mm.

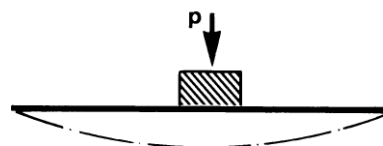
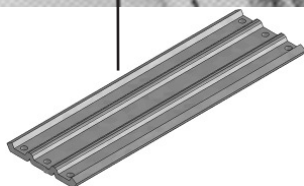
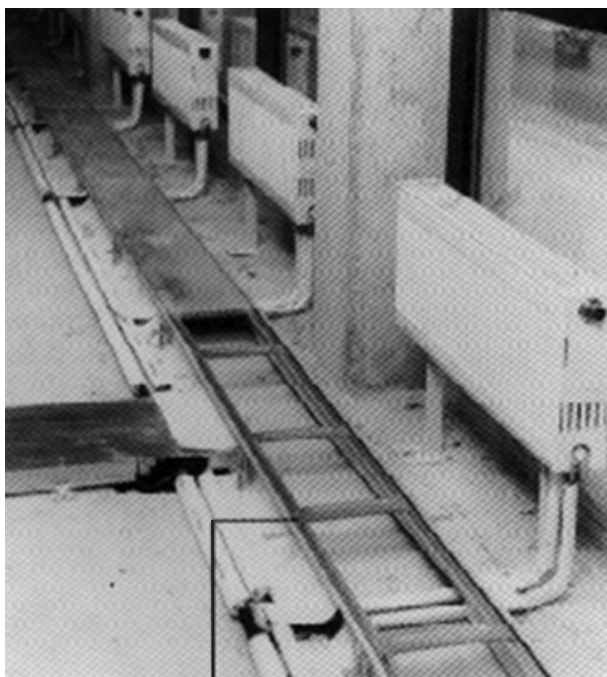


### Installation conditions:

EFK...	AB	LE	LI
200	240	103	179
300	340	203	279
400	440	303	379
600	640	503	579

## Load capacity of flush floor trunkings type ESS / EFS

The underfloor trunking systems, floor boxes and accessories must have sufficient mechanical stability. The underfloor trunking systems, junction units and floor boxes (hinged covers, cassette covers) are manufactured according to the technical requirements of DIN VDE 0634 part 1 and part 2. The load acquirment of flush-mounted floor components is 1500 N. Slight deflection is permissible.



Trunking width mm	Cover thickness mm	Cover deflection $p = 1500\text{N}$ mm
200	3	0,4
250	3	1,0
300	3	2,1
350	3	0,8
400	3	0,8
500	3	1,2
600	3	2,3

Flush-floor mounted trunking system for dry rooms with dry or wet cleaned floorings, thickness of blind covers 3 mm, gal. sheet steel.

For reinforcement load bearing cross bars are placed under the blind covers.

From trunking width of 350 mm the cross bars are supplied with additional centr supports.